

Quick Start Guide

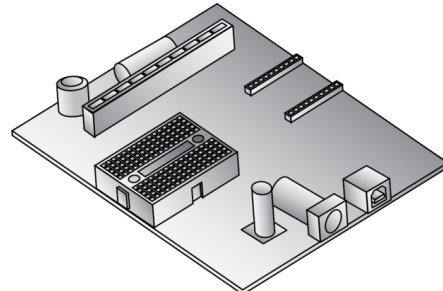
XBee® Wi-Fi Cloud Kit



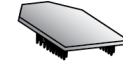
90002196-88 C

1 Verify your components

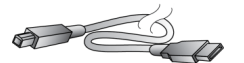
Included equipment



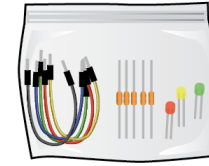
Development board



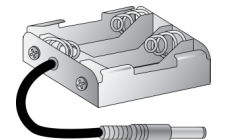
XBee module



USB cable



Loose components

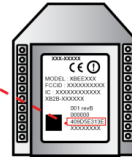
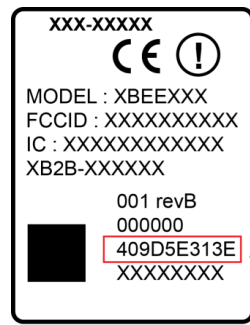


Battery holder

2 Write down the MAC address

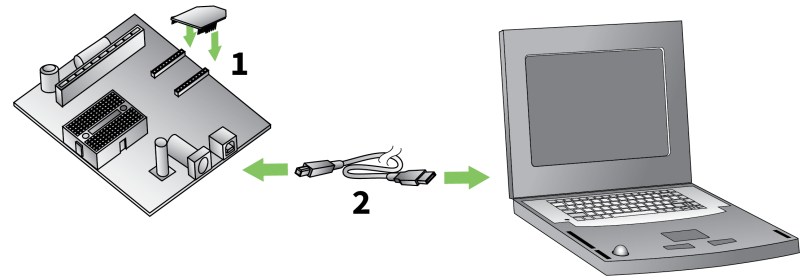
Write down the XBee MAC address located on the back of your module.

00409D_____



3 Connect the hardware

1. Connect the XBee module to the development board.
2. Connect one end of the USB cable to the development board and the other end to your computer.



4 Configure your device using the Wi-Fi interface

1. Use your computer to connect to the Wi-Fi network named 'xbee-xxxxxx'. The 'xxxxxx' represents your XBee's MAC address.

Note If your XBee module does not show up in the list of available access points, press the Commissioning Button four times to reset it to factory defaults.

2. In a web browser, enter the IP address to access the configuration settings for your device: **192.168.1.10**
3. Navigate to the **Network Access** portion of the configuration page and fill in your local Wi-Fi information.
4. Once the configuration is complete, click **Apply** (located at the bottom of the configuration page). Your device will attempt to connect to your local access point and Device Cloud.

SSID: Your SSID is the name of your local access point and is case sensitive. Your module uses the access point to connect to the Internet.

Passphrase: The passphrase is a password or key used to connect to your access point. This is case sensitive.

Encryption Enable: 1 (WPA-TKIP) is a common choice; otherwise, set the encryption enable setting to 0 if no passphrase is needed to configure your wireless settings.

The Associate LED on the device will start flashing once you have successfully connected to your local Wi-Fi access point.

Note See the *Troubleshooting* section in the *XBee Wi-Fi Cloud Kit Getting Started Guide* for information on how to troubleshoot your device. You can find the document online at www.digi.com.

5 Next steps

Digi Technical Support: Digi offers multiple technical support plans and service packages to help our customers get the most out of their Digi product. For information on Technical Support plans and pricing, contact us at 877.912.3444 or visit us at www.digi.com/support.

Documentation feedback: To provide feedback on this document, send your comments to techcomm@digi.com.